




We, Veracity UK Ltd. of Prestwick International Aerospace Park, 4 Dow Road, Prestwick, KA9 2TU, United Kingdom, declare under our sole responsibility that the product :VCS-4P1 (CAMSWITCH 4 Plus) is in conformity with the essential requirements and other relevant requirements of the EMC Directive (2004/108/EC)

The product is in conformity with the following standards:  
EN 55022:2010  
EN 55024:2010

Responsible Person  Mr Alastair McLeod, Managing Director



Issued 6th May 2013 at Prestwick. This device complies with Part 15 of the FCC Rules. Operation is subject to the following two conditions: (1) this device may not cause harmful interference, and (2) this device must accept any interference received, including interference that may cause undesired operation.

NOTE: This equipment has been tested and found to comply with the limits for a Class A digital device, pursuant to Part 15 of the FCC Rules. These limits are designed to provide reasonable protection against harmful interference when the equipment is operated in a commercial environment. This equipment generates, uses, and can radiate radio frequency energy and, if not installed and used in accordance with the instruction manual, may cause harmful interference to radio communications. Operation of this equipment in a residential area is likely to cause harmful interference in which case the user will be required to correct the interference at his own expense.

# CAMSWITCH™ 4 PLUS

802.3AT POE NETWORK SWITCH

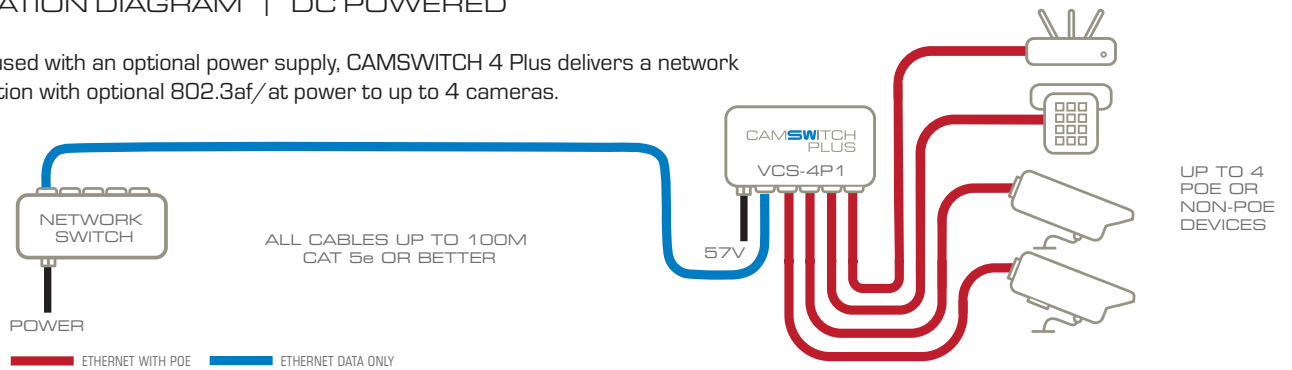
## QUICK START GUIDE

VCS-4P1



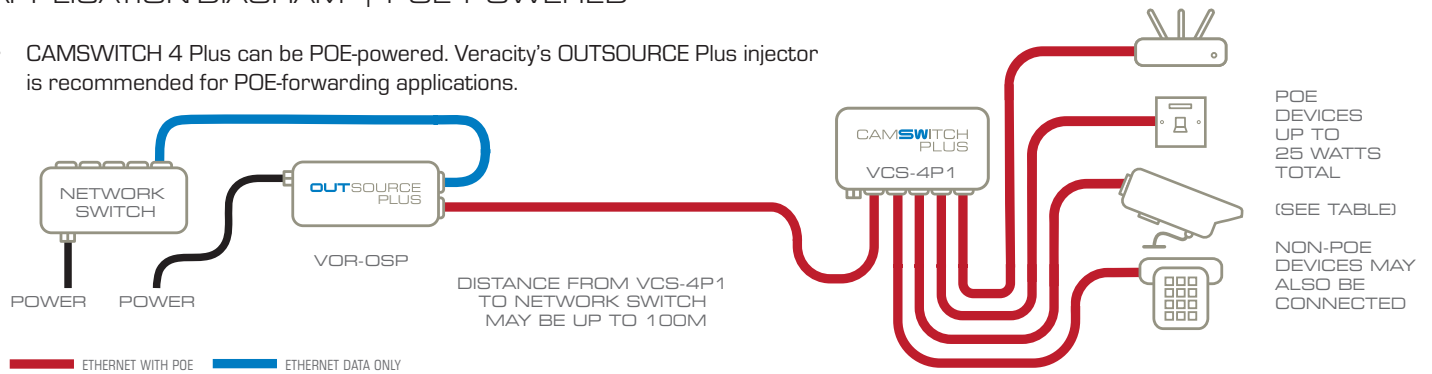
### APPLICATION DIAGRAM | DC POWERED

- When used with an optional power supply, CAMSWITCH 4 Plus delivers a network connection with optional 802.3af/at power to up to 4 cameras.



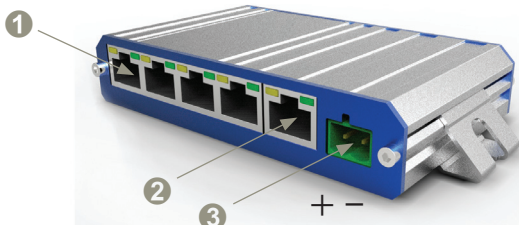
### APPLICATION DIAGRAM | POE POWERED

- CAMSWITCH 4 Plus can be POE-powered. Veracity's OUTSOURCE Plus injector is recommended for POE-forwarding applications.






### CONNECTIONS

- All ports support 10/100 Base-T with auto-negotiation and auto-crossover



- 4 network ports with 802.3at POE
- Data port with optional POE in
- 57V DC input

Port LEDs : Green  POE enabled (POE port),  
 Power good (non-POE port)  
Yellow  Ethernet Link / Activity

## POE POWER AVAILABILITY

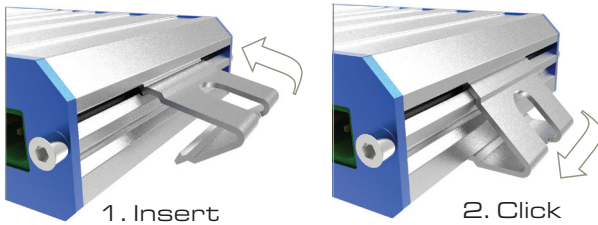
- CAMSWITCH 4 Plus can deliver up to full 802.3at POE Plus power on all 4 ports, however the total budget is limited by the power supply connected.
- The power budget is the total power used by POE devices. This information may be found in the IP camera or POE device datasheets. POE power classes are ignored.
- For example, the VPSU-57V-1500 provides a 78W budget. This is enough for two full-power 802.3at (25.5 watt) cameras plus two full power 802.3af (13 watt) cameras, or four cameras of up to 19 watts each.

- To check the power budget for your supply, refer to the table below. Only Veracity 57V power supplies may be connected to DC inputs.

INPUT	SOURCE	BUDGET
DC	VPSU - 57V - 800	40 watts
	VPSU - 57V - 1500	78 watts
POE	POE switch	10 watts
	VOR - OSP	25 watts

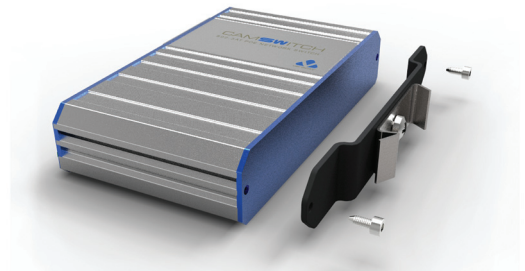
## WALL MOUNT CLIPS

- To mount the unit securely to a flat surface, fit the enclosed clips as shown and refer to the drilling template below.



## DIN RAIL CLIP (Option)

- Remove the two rear screws and fit as shown.



## DIMENSIONS | MOUNTING HOLE TEMPLATE

- Width 110mm (131mm inc. clips) | Depth 70mm (76mm inc. connectors) | Height 22mm | Weight 135g

Scale 1:1

